

Chapter IX

The Churches



INTRODUCTION

What do parents think is most important for their children? In answer to this question let us read what George E. Sweazey says in his book.

THE KEEPER OF THE DOOR

“Judging from where some Christian parents put their hardest efforts, you would think that they had opened their Bibles and read that God had commanded them to get their children into the finest schools and to provide them homes in the most attractive neighborhoods. But, important as those are, they are comparatively so unimportant that the Bible never mentions them. What the Bible does say quite clearly is that parents are, ‘to love their children’; it bids them learn the words of God and says, ‘thou shalt teach them diligently unto thy children, and then shalt talk of them when thou sittest in thine house,’ it commands parents to bring children up in the nurture and admonition of the Lord — for from these are the issues of life.”

In another discussion he says “There is something of the church about every fine home—just as there is something of the home about every fine church”.

Henry C. Link in his book *The Return to Religion* gives us these inspiring thoughts, “Above all, your religion means a trust in God and His sometimes mysterious ways. Such trust will give you the inner security and confidence you need to carry you through the difficult situations — You are infinitely fortunate to have a religion to depend on.”

Churches are making it possible to have a reli-

gion upon which one may depend. At present there are eleven churches in Oregon with definite plans for three more. Jerusalem has three with at least three more in adjoining territory.

FIRST CONGREGATIONAL CHURCH OF OREGON TOWNSHIP

On October 28, 1849, at the residence of Horace Howland the First Congregational Church of Oregon Township was organized. The charter members were Robert Denman, Jacob C. Denman, Anna Denman, John L. Brown, Jane Denman, Nancy Brown, Ezra Howland, and Horace Howland. These members were living in the vicinity of what is now known as Consaul Street. Their first communion service was held in the home of William Consaul December 9, 1849.

In 1850, a log church was built at the corner of Consaul and Otter Creek Roads. Reverend Ezra Howland was chosen pastor and continued to serve until the outbreak of the Civil War. Every male member, except Reverend Howland, enlisted in the service. At the close of the war the First Congregational Church of Oregon Township was reorganized and became known as the Second Congregational Church of Toledo September 5, 1868.

EXTENSION OF FIRST CONGREGATIONAL CHURCH AT DeBOLT'S CORNERS

Reverend Ezra Howland, pastor of the First Congregational Church of Oregon, was invited to extend his services to a community known as DeBolt's Corners. This was later known as Momeneetown. He held services in a little frame school house located on the northwest corner of Jeremiah Clay's property on Corduroy Road. This old schoolhouse had been purchased from the Board of Education by Jeremiah Clay and Horace Benedict in 1872. It was moved across the road on Mr. Clay's farm where it was used as a church. A few years later a United Brethren pastor was invited to take over the work where a few faithful people continued supporting the church until this denomination discontinued sending a pastor.

The Churches

CLAY CHAPEL METHODIST PROTESTANT

After the United Brethren discontinued services the Methodist Protestant denomination sent Reverend David Calkins to establish a church in this territory. He began services in this little frame school-house in October 1890.

In time the number of people attending increased. The interest grew and under the leadership of Reverend Calkins they decided to build a new church. Again Jeremiah Clay came forward and donated an acre of ground located on the southeast corner of his property on the corner of Seaman and Big Ditch.

By sacrifice and hard work the church was erected and dedicated May 1893. It was named Clay Chapel in honor of Mr. Clay. On the same site a parsonage was built and Reverend Calkins continued to serve the community until 1897.

The charter members were: Reverend D. Calkins; B. A. Clark; E. D. Mickens; G. H. Peach, Sr.; D. E. Wadsworth; G. W. Peach; E. H. Fields; Jeremiah Clay; C. L. Maybee, A. R. Fassett, Jr.; W. M. Hamlyn; C. A. Clay; George E. DeKay; and Adam Shelles.

In 1901, Curtice was added to Clay Chapel making it a circuit known as Curtice. Bay Shore was added in 1937, and continued to be served until 1943, when it became a part of Ironville circuit. It remained a part of the Ironville circuit until 1954, when it merged with Christ Church Methodist.

Pastors serving Clay Chapel, later Curtice Circuit:

Reverend David Calkins - 1890 - 1897
Reverend H. D. Cowan - 1897 - 1898
Reverend J. D. Trumbo - 1898 - 1900
Reverend W. H. Streitenberger - 1900 - 1902
Reverend J. F. Wilkins - 1902 - 1904
Reverend V. H. Rollins - 1904 - 1906
Reverend David Calkins - 1906 - 1908
Reverend Asa Owens - 1908 - 1909
Reverend A. H. Miller - 1909 - 1912
Reverend C. B. Doty - 1912 - 1913
Reverend T. F. Nichols - 1913 - 1914
Reverend J. A. Bland - 1914 - 1915
Reverend A. T. Baughman - 1915 - 1919
Reverend W. S. Wert - 1919 - 1920
Reverend T. A. Arthur - 1920 - 1923

Reverend J. K. Chaney - 1923 - 1925
Dr. Coburn - Supply 1926
Reverend J. W. Rice - Supply 1926
Reverend W. E. Mowery - 1926 - 1929
Reverend H. M. McAdow - 1929 - 1935
Reverend J. L. Buckley - 1935 - 1937
Reverend W. E. Grove - 1937 - 1944
Reverend L. R. Foltz - 1944 - 1946
Reverend William McClintock - 1946 - 1951
Reverend J. W. Armentrout - 1951 - 1953

BAY SHORE UNION CHURCH

A group of people residing in the Bay Shore district met July 15, 1887, and incorporated for the purpose of building a Union Church which was to be used for religious and benevolent purposes.

A board of managers was elected and the Articles of Incorporation were signed by thirty-six people. I. N. Keller was elected the first president of the Association.

The Association employed an architect who drew plans for a church thirty by fifty feet. Bids were received, the highest being \$2323 and the lowest \$1376. All bids were rejected. A mason was employed to build the foundation and a carpenter employed by the day to build the church.

The property was donated by Thomas Wynn and the church was located on Bay Shore Road. The deed specified it was to be held by the church organization as long as it was used for church purposes. At the present time the building is being used by the Southern Baptist.

The church was dedicated June 24, 1888. Various denominations conducted services in the church over a period of years. On July 19, 1904, the Methodist Protestants were given permission to conduct services every Sunday, but their meetings were not to conflict with regular appointments in force. In 1937, Bay Shore was added to the Curtice Circuit and was served in this manner until 1943. Bay Shore was then added to Ironville Circuit until 1954, when it merged with Clay Chapel and Curtice and became Christ Church Methodist. However, it is still a guiding light to the community under the Southern Baptist.

SOUTHERN BAPTIST CHURCH

For some time the Bay Shore Church building was used by the young people of the merged church.

The Churches

An attempt was made by the Christ Church Methodist to get title of this building. However, this plan was abandoned and the church was vacant for a time.

In this summer of 1957, the South Toledo Baptist Church located on Glendale realized the need of a church in this area. Reverend Samuel Van Horn was sent as the first pastor serving for three months. He conducted a survey to determine the interest and those who might be considered prospects for the new work. A vacation Bible school was held and interest shown in the work. After the resignation of Reverend Van Horn, the work was continued by Reverend John Hornsby. The Sunday School continued to grow under his leadership and the church membership was twenty-five when he resigned to continue his training in 1958.

Reverend Robert Tucker arrived during the summer of 1958. Much interest has been shown in the church and Sunday School under his leadership. The Sunday School has a membership of one hundred thirty or more with an average attendance of 95. The church membership has increased from twenty-five to over seventy. Due to lack of space the church is renting Wynn Elementary School in which classes are held each Sunday morning.

The goals of the congregation are to organize a church of their own although they appreciate the sponsorship of the South Toledo Church. This goal has now been reached. The second goal is the building of a new church. This goal is about to be accomplished as a site on Seaman near Wynn has been purchased.

Reverend Tucker has been a real inspiration to the group. Under his leadership they are looking forward to bigger and better things.

BONO BAPTIST CHURCH

The people of the community known as Shepherdsville in 1897, realized they should have a place to worship. Accordingly, arrangements were made to use the schoolhouse. Mrs. Edward Stoddard, mother of Carl Stoddard, conducted the first service and a few people continued to meet every Sunday. There was a great desire to have a church of their own. In 1898, A. C. Koester and Henry Murphy began a campaign to raise funds. Mr. Koester had moved from Hardin County on the Howard Farms and became pastor of this group.

Mr. Murphy donated the site on Main Street. The people of the community were interested and responded by giving money and labor. Peter Lickert of Limestone drew plans for the church building. Making use of Ward's Canal, E. S. Stoddard used his boats to transport stone from Kelly's Island for the foundation of the church.

The construction of the building was started in 1902, and completed in 1903. During this time, the name of the town was changed from Shepherdsville to Bono. Thus the name of Bono Baptist Church was given to the new building.

In 1904, the Toledo Baptist Church loaned the organization \$500 for one year accepting a mortgage on the church and lot.

For the next ten years the struggle was difficult and at times discouraging, but through the guidance and encouragement of A. C. Koester, the pastor, the congregation remained faithful and succeeded in paying for the church. The salary of the pastor consisted of small contributions and small collections each Sunday.

In October 1938, Reverend Thomas Hughes became pastor serving for nineteen years. During this time an effort was made to provide for a resident pastor who could serve his own congregation and the Spanish Speaking Baptist who had moved into their midst as workers on the farms.

The Mission and Church Extension of the Toledo Baptist Church met with Dr. S. S. Feldman and with the help of Reverend Harold Longhead of Granville a survey was made. Since the survey indicated the need of a residential pastor, efforts were made to secure the services of such a man. In February 1958, Reverend Clair A. Popp accepted the church.

Through his efforts and with the help of the District Representative of Church Extension, Ed Catlos, plans were made and accepted for a building in which classes for Sunday School could meet including a fellowship hall and kitchen.

This project was financed by a loan of \$10,000 from Ohio Baptist Foundation at Cincinnati and another \$10,000 by The Home Mission Society.

The building is making it possible to give the community much better service. They have broadened their program giving the Spanish speaking people summer school and a social program throughout the year.

The Churches

HARBOR VIEW MISSIONARY BAPTIST CHURCH

The Detroit River Association of Missionary Baptist Churches organized at Harbor View on September 10, 1949, with thirteen charter members. It is located at 2166 Autokee Street and is known as the Harbor View Missionary Baptist Church.

They purchased two lots. In 1949, they erected a church 24 by 40 feet. Later an addition was added. The membership is now 142 with a Sunday School of 125 members. The church attendance averages 100. The membership is growing. Another lot has been purchased to the north of the church where they expect to build a new auditorium in 1960.

The pastors serving this church were as follows:

Reverend Orren Tyson, September 1948 —
November 1949

Brother Cliff Gear, November 1949 — May
1950

Brother Prentess Russell, May 1950 —
November 1950

Brother Robert Besgrove, November 1950 —
to present

ST. IGNATIUS CHURCH

During the early 1870's, the territory around the corner of Big Ditch and Corduroy roads, later known as Momeneetown, was sparsely settled. In time more families moved into this territory and the Catholics ministered to their people by conducting Mass in one of the homes. Reverend John McMahon of Blackberry was sent as spiritual advisor to the people of this new mission.

Enos Momenee, who operated a general store at the corner, donated two and one half acres of ground for a church and cemetery. This plot of ground was located about one fourth mile from the store on Big Ditch Road, now known as Stadium.

Plans for a church were drawn and much of the lumber used was prepared from trees donated by the parishioners.

The first Mass in the new church was celebrated on Christmas of 1883, by Reverend John McMahon.

Edward J. Momenee, son of Elizabeth and Enos Momenee, was the first baby baptized in the new church.

During the time the membership was increasing it was served by pastors from Blackberry. Rev-

erend John McMahon was followed by Reverend Armand Hamelin. One of the former members, Joseph Clements, remembers when Reverend Hamelin drove a team of ponies from Blackberry to meet his appointments. When the roads were almost impassable he made the trip on Saturday afternoons and spent the night in the room off the altar using the Bible as his pillow.

In 1893, a rectory was built and a resident pastor assigned to St. Ignatius. By 1899, the membership had increased to the extent it became necessary to enlarge the church. In 1904, a school hall was built.

On November 26, 1915, the church and hall were destroyed by fire. Arrangements were made to continue services in a hall at the corner of Corduroy and Big Ditch roads.

By May 1916, ground was broken for a new church on the same site and the first Mass celebrated on November 26, 1916, a year after the first church was burned.

Arrangements were made for temporary living quarters in the new church for the pastor. Later a home, formerly owned by Joseph Momenee, was purchased and converted into a rectory.

On Saturday evening preceding Easter of 1926, the church was destroyed by fire. The Sisters who taught in the parish school were living in the rear of the church at this time. They were awakened by the odor of the smoke and Sister Mary Coline ran over the hot floor to the belfry to ring the bell which brought aid. However, for the second time, the church was a total loss. In spite of this disaster members carried the news throughout the parish informing them that Easter services would be held at Dunn's Hall the next morning.

Reconstruction was begun at once and by December 8, Mass was held in the new basement.

The church membership has grown through the years and at present 380 families are enrolled and four Masses are said every Sunday and on holidays. The parish includes 35 square miles extending from Lallendorf Road on the West to DeCant on the east and from the bay on the north to North Curtice Road on the south.

The pastors who have served St. Ignatius are:

Reverend John McMahon
Reverend Armand Hamelin
Reverend Louis Brair
Reverend James Rouchy

The Churches

Reverend John Mevel
Reverend John Berthelot
Reverend John A. Merickle
Reverend Dr. Otto Kappus
Reverend Gerald Connolly
Reverend A. J. Bishop
Reverend Albert Springer
Reverend C. C. Heringhaus

OUR LADY OF MOUNT CARMEL AT BONO

EARLY HISTORY

On July 11, 1933, Reverend Gerald W. E. Dunne, Reverend John Vogel, Kenneth Lewis and George J. Baumgartner were at Bono when Reverend John Vogel interviewed Louis Bono, Jerome Navarre, and August Tank asking each one similar questions to determine where and when religious service had been held in the vicinity of Bono. These questions and answers were recorded and placed in the files of the Bono Church. Reverend Isadore Fries, the new pastor, very graciously loaned this manuscript and others from which part of this information was taken.

INFORMATION OBTAINED

According to Louis Bono, an Indian living at Bono, and Jerome Navarre, one of the residents of Bono for most of this life, the following information was obtained.

Mass was held in the home of Mose Perry who resided at the east end of Brown Road. Louis Bono stated that he had been baptized at the Home of Mose Perry. He had been baptized three or four times, once when in Toledo with his mother, who was not living with his father. Since this was a Protestant baptism and his mother had him baptized as Louis Willet, the father had him rebaptized.

Jerome Navarre stated that Father Thein came to the home of Mose Perry to hold services and later was followed by Father Vijoun. Mr. Navaree then stated that Father Vijoun came from Toussiant fifty-two years ago which would have been in 1881, and served for some time. According to the statements made Fathers Thein and Vijoun, Mass had been held previous to this date at the home of Mose Perry, at least once a month. Thus the first missionary station established in the vicinity was at the home of Mr. Perry.

LATER DEVELOPMENTS

August Tank, who was born west of Trowbridge on a farm February 10, 1877, stated that he knew nothing of the mission as that was before his time. From his statements one reaches the conclusion that his father arrived at Bono just previous to 1901.

THE FIRST MISSION AT BONO

According to Mr. Tank, Father Miller came to Bono and held meetings for a week in about 1902. The meetings were held in the hall above the store. Father Miller stayed with Stephen Aubrey who owned the store at that time. No one followed Father Miller at this time to establish a permanent mission.

THE BEGINNING OF A CHURCH

Reverend Merickel received a call from Bono. An elderly man whose name was Cutcher was very ill. Reverend Merickel made the call and was invited to remain for the night at the home of August Tank. The next morning word was sent around that Mass would be said at the home of Mr. Tank. A few men and several women attended the services. This led Reverend Merickel to bring Reverend Knill to hold a missionary service for one week. Arrangements were made to use a vacant saloon. Following these meetings plans were made to have Mass once a month. About twenty-five families became members of the mission.

The people were interested in building a church. August Tank donated eight lots for a church site on Jerusalem Road. The corner stone was laid July 15, 1912. This was the feast of Our Lady of Mt. Carmel, so it was suggested that this name be given to the new church.

The architect, Joe Huber, was given a fee of \$50.00 for the plans. John Romstadt was employed as builder and was paid by the day. The church was completed for \$3200. The first Mass was said November 1, 1912. Services were held every two weeks. In 1918, Toussaint was attached to Oak Harbor and Frenchtown was added to Bono. In 1937, Reverend Cyril Lauer was assigned as resident pastor.

The following pastors served this church:

Reverend John Merickel, 1912-1918
Reverend Fr. McCarthy
Reverend F. X. Gosser, 1918-1937
R. T. Reverend John Vogel

The Churches

Reverend Cyril Lauer, 1937-1960
Reverend Isadore Fries, 1960-1961

ST. LUKE'S EVANGELICAL LUTHERAN CHURCH, YONDOTA

Several families in Jerusalem Township were eager to have a church established in their community. A few of them contacted Reverend Edward J. Schmidt, pastor of the First St. Mark's Lutheran Church on Grasser Street in what was then Oregon Township. He agreed to conduct services for them in addition to continuing his work as pastor of St. Marks.

He began holding services in the old Bailey School on the Cousino Road about one half mile south of the Jerusalem Road. Later a more central and convenient place was found in the Yondota School, just south and west of the present church site. As the interest and attendance grew a congregation was formally organized on March 1, 1903, and a constitution adopted, at which time there were fifty-six members.

Two years later on April 30, 1905, the corner stone of the present church building was laid. The church building, a concrete block construction, was completed by volunteer labor during the year. It was erected on a site set aside for that purpose by Paul Loboschewski.

The altar, pulpit, baptismal font and hymn board were the handicraft of Reverend Schmidt whose loving services were greatly appreciated by the members.

A parish hall was added in 1928, and during the summer of 1945, the church was redecorated and a Hammond organ purchased. On April 28, 1948, a parsonage and four and one half acres of land at the corner of Howard and Wallace roads were purchased.

Both church and parsonage were made more comfortable by the new oil furnaces installed in October of 1950.

The rapid growth of the Sunday School called for more planning and in 1951, this need was met by a thirty foot addition. Volunteer workers stepped forth again to do all the work except the roofing.

To prepare for their fiftieth anniversary October 11, 1953, they redecorated and recarpeted the church.

The membership at present is 630, 217 of which are children.

The church has been and is being faithfully served by the following pastors:

Reverend Edward J. K. Schmidt, March 1903-1910

Reverend R. E.M. Engers, 1910-1914

Reverend A. C. Wuchter, 1914-1917

Reverend R. H. Benting, supply pastor, 1917-1918

Reverend Edward J. E. Kuhlman, 1919-1948

Reverend Paul H. Buchholtz, 1948-1953

Supplied by various pastors, 1953-1954

Reverend Ronald D. Homrighausen, 1954-1956-1961

Reverend Fredrick Lambertus (retired), 1956-3 months

Reverend Phillip A. Tamaru, 1956-

The present pastor, Reverend Phillip A. Tamaru, came to the United States from Estonia. He spent the war years 1945-1960, in Germany.

ST. JOHN'S GERMAN LUTHERAN CHURCH

Reverend John Doerfler, pastor of the Salem Lutheran Church on Huron Street in Toledo, began mission work among the scattered Lutheran families in Oregon Township. Services were held in a log cabin at the corner of Consaul and Otter Creek in the early 1850's. Beginning with eight families they soon outgrew the log cabin and moved to Fred Clausing's barn located on Jerusalem Road.

In 1861, they built their first church twenty-one by thirty-one feet on the present site. The charter members were: John Fredrick Clausing; John F. W. Bitter; John Christopher Ackerman; Leonhard Schmidt, Fredrick Koehne; John Dietrich Koehne; and Henry Tiedjen.

In 1862, the congregation called Reverend Carl Beckel as its first local pastor. He planned the incorporation of the church under the laws of Ohio on June 23, 1863. The first trustees were: Fred Clausing; John Bitter; and Gottlieb Burr.

Under Reverend Beckel's leadership, the membership increased and a new church was built in 1876. A small school building was erected near by and a parochial school was established.

As the enrollment of the school increased, there was need of a director of the school. Christian

The Churches

Lohmann was employed and continued until 1905, when the parochial school was discontinued. The Orphan's Home then established an elementary school which has continued in operation to the present time.

Reverend Gideon Rausch succeeded Reverend Beckel on April 22, 1894, serving the congregation for six years when Reverend William Wacke took charge. The early settlers spoke German and the services were conducted in this language until 1910, when English services were introduced. In 1915, regular services were conducted in English and German. By 1934, the German services were discontinued and the few who could not speak English attended services in the Old People's Home.

The second church, forty by sixty feet, was built in 1876, at a cost of \$3,500. The membership continued to increase and in 1928, the present church was built at a cost of \$80,000 and equipped with a new pipe organ at an additional cost of \$4,000.

At present there is need of additional educational facilities which the congregation are arranging to build in the near future.

The pastors who have served St. John's are:

Reverend John Doerfler, Founder
Reverend Carl Beckel, 1862-1893
Reverend Gideon Rausch, 1894-1900
Reverend William Wacke, 1900-1929
Reverend C. A. Wiederanders, 1929-1947
Reverend Gerd H. Heidmann, 1947-1961

FIRST ST. MARK'S LUTHERAN CHURCH

This church located on Grasser Street near Pickle was organized under the leadership of Reverend Markscheffel in 1863. It was known as the Evangelical Lutheran St. Marcus Gemeinee. Later it became known as First St. Mark's Lutheran Church.

Three lots were donated by Mr. and Mrs. Henry Brand in 1874. The parsonage and parish hall were built in 1888.

New members were added and in 1939, they requested a full time pastor.

In 1947, the church was remodeled at which time a basement was constructed to be used as Sunday School rooms and a kitchen. The new educational unit was completed in 1960. This makes it

possible to expand the program and meet the needs of the community.

The pastors serving this church were:

Reverend Markscheffel, 1863-1870
Reverend John Klag, 1870-1895
Reverend J. J. Schmidt, 1895-1897
Reverend E. J. K. Schmidt, 1897-1910
Reverend R. E. M. Engers, 1910-1913
Reverend A. C. Wuchter, 1913-1917
Reverend R. H. Benting, 1917-1919
Reverend E. J. E. Kuhlman, 1919-1939
Reverend Robert L. Meister, 1939-1944
Reverend F. E. Strobel, D.D., May 1944-
December 1944
Reverend Edward Orinson, 1944-1947
Reverend Klickman, 1947-1953
Reverend George Haynes, 1953-1961

BETHANY M. E. CHURCH

A few families living in the vicinity of the old Gardner School on Pickle Road were interested in organizing a church. In 1844, the following group met in Gardner School with Reverend A. Prentice and wife: Mr. and Mrs. H. Vinal, Mr. and Mrs. James Culver, Mr. and Mrs. Samuel Horton and two daughters; and Mr. and Mrs. Stephen Rideout. They began worship services in November 1844, and continued services in the schoolhouse for a period of eight years.

More people became interested and joined the group. In 1852, they built a church on the opposite side of Woodville Road from the present church building. This church was known as the "Oregon Methodist Episcopal Church". Reverend Welsh was the first pastor. He was followed by Reverend Farley who was with the "East Toledo Mission" which became known as the 3rd Street Methodist Church. Since the church was unable to support a minister of its own, it continued with other churches near by as a circuit. Twice it was a circuit with Millbury and then with a church on Albany Street known as St. James. Later with the church on 3rd Street which afterward became known as Euclid Methodist. Its last connection as a circuit was with Clark Street M. E. Church.

In the early 1880's, Reverend B. L. Rowland had charge of the circuit. During the fall, winter and spring the road was almost impassible for a horse and buggy even though the pastor was traveling

The Churches

on the old worn out Woodville Plank Road. One Sunday morning as he arrived at the Oregon church he remarked, "Three miles out from Jerusalem is Bethany." This remark awakened an interest in a new name for the church. Why not change the name from Oregon Methodist to Bethany? From this time forward it was known as the Bethany Methodist Church.

In 1892, the circuit was composed of Clark Street and Bethany under Reverend C. B. Holding. The congregation at Clark Street decided they were able to support a pastor of their own. Bethany was now left alone which led the congregation to decide to build a parsonage and ask for a full time pastor. A lot was purchased on Brown Road near Woodville where the parsonage was built. In October 1892, B. F. Gordon was called as the first full time pastor.

In time the congregation increased and the need for more room was felt. A substantial gift for a new church was promised by Charles and Walter Towers of Pasadena, California. This led to the purchasing of a new site on the opposite side of Woodville Road and the work of excavating was completed by men of the church and interested members of the community. Under the leadership of Reverend Frank Miller, pastor, the church was dedicated January 28, 1917. The parsonage was moved from Brown Road to a site just back of the new church. This band of earnest, devoted workers has been the means of interesting and sending forth three missionaries and a pastor: Erma Sigler and Roland Scott to Africa, James Muir to Peru, and George M. Wilson as a regular pastor.

The present congregation is carrying on the good work under Reverend Anthony Drake.

CHRIST CHURCH METHODIST

Under the leadership of Reverend John W. Armentrout the congregations of Curtice, Clay Chapel, and Bay Shore merged to form a new church known as Christ Church Methodist. They began their worship together in the Clay Chapel building on April 4, 1954.

The following fall the Curtice Church and parsonage were sold and a lot purchased at the corner of Starr and Stadium. Grants from the Methodist Conference amounting to \$18,500 were given to this

congregation to assist them in building a new church.

Reverend Armentrout was appointed pastor of Christ Church Methodist in June 1953, and served until June 1956. He was succeeded by Reverend Robert Ash. The church was built under the direction of Reverend Ash and consecration services were held May 19, 1957. Reverend Ash was followed by Reverend Glen Beck who is serving a congregation of four hundred at this time.

OREGON FULL GOSPEL TABERNACLE

On April 5, 1958, a new organization rented the old church building at the corner of Seaman and Stadium known as Clay Chapel. This new church is the Oregon Full Gospel Tabernacle. They have rented buildings from Christ Church Methodist and hope to establish a permanent church.

Services are held regularly every Sunday morning and evening. Prayer meetings are conducted every Thursday and Saturday evenings of the week.

ST. JOHN'S ROUMANIAN CHURCH

A group of people living in East Toledo and the surrounding territory felt the need of a church. They began their organization by meeting in the homes of their members. In 1942, they purchased a building on Front Street where they met for a few years. In 1947, they purchased the old Homestead Schoolhouse on the corner of Coy and Seaman roads.

They have a congregation of about twenty members but are unable to support a resident pastor. Their church society meets once a month and whenever possible they secure the services of a pastor from Detroit since there is no Roumanian Orthodox Church in Toledo.

They have built an addition which provides them with the modern conveniences in the way of a kitchen and serving facilities.

FAITH E. U. B. CHURCH

The East Broadway Evangelical United Brethren Church was organized September 29, 1901, with 26 charter members. The Sunday School was organized May 5, 1901, and met in a store at the north east corner of East Broadway and Navarre Avenue.

In 1902, lots were purchased for \$1,630 and a frame church was built at a cost of \$2,000 at East

The Churches

Broadway and Navarre. In 1906, the parsonage was erected at a cost of \$4,500. A larger building was needed in a few years which was begun in 1910, and completed in 1912, at a cost of \$18,445.

The church continued to grow and by faith pressed onward, but were faced with the problem of no parking space and the possibility of Navarre Avenue being made wider. Some farsighted members suggested the purchase of twenty acres of land at the corner of Coy and Starr Avenue. By June 1955, final plans for the purchase were made. Through faith, work, and determination the congregation moved forward and by May 15, 1960, a new church was dedicated known as the Faith Evangelical United Brethren Church of Oregon.

Pastors who have served this church are:

W. C. Shupp, 1901-1905
C. H. Crabbs, 1905-1912
E. H. Wilson, 1912-1915
R. A. Powell, 1915-1917
E. H. Wilson, 1917-1918
C. B. Fletcher, 1918-1923
C. O. Callander, 1923-1936
C. D. Moore, 1936-1938
F. B. Esterly, 1938-1943
Roy E. Cramer, 1943-1961

PRINCE OF PEACE LUTHERAN CHURCH, MISSOURI SYNOD

The Central District Mission Board of the Lutheran Church, Missouri Synod sent Reverend K. D. Kuhlman to Oregon to determine whether a mission should be established in this area. He spent two and a half months on a preliminary survey. He held his first service on September 20, 1959, at the Dunberger Legion Post with 116 in attendance.

On Easter Sunday April 17, 1960, the charter was closed with fifty members. On June 18, 1960, they were incorporated as an organization with authority to purchase property and plan for a church.

At present they are continuing to use Dunberger Post as a place of worship.

They purchased seven acres at the corner of Pickle and Lallendorf roads where they will build a church. In addition to the church, a fellowship hall and a parsonage will be included. Later they may establish a parochial school.

Their officers are as follows: Otto Kontak, president; Ervin Hill, vice president; Henry Kontak, treasurer and financial secretary; and Bernard Roberts, secretary.

ST. PAUL'S EPISCOPAL CHURCH EARLY HISTORY

The beginning of St. Paul's Church consisted of a small group of children who met in Mrs. Charles Clemons's home for Sunday School services. Mrs. Clemons, an enthusiastic church worker, taught the group.

Mr. and Mrs. Charles Clemons were members of the Trinity Church. They lived in East Toledo and felt the need of a church in their community. During the winter of 1883, they conducted the home Sunday School. The rector of Trinity, Dr. Edward R. Atwill, became interested in the project. In May of 1883, Mr. and Mrs. Frank B. Swayne moved into the community and enlisted their services. A storeroom on Cherry Street (now Euclid Avenue) near Second Street was rented at twelve dollars a month and the Sunday services were held in this room. A number of teachers and helpers from Trinity volunteered their services. Sunday School was held at three o'clock. Later an evening song service followed the school session. At this time the attendance consisted of twenty children and four or five adults. By January of the following year, there were sixty-five pupils and eleven teachers. Under the leadership of Dr. Atwill the mission grew. In March 1885, Dr. Atwill suggested it be named after his home parish in Burlington, Vermont. It was now known as St. Paul's Episcopal Mission. Within four years the attendance increased and an adjoining room was added to their meeting place. At Easter time, the group would march across the bridge to join the congregation at Trinity in a union service.

The members of St. Paul's decided to build a permanent church at the corner of Fourth and Euclid Avenue. On December 9, 1889, the church, completed and fully equipped, was consecrated by Bishop Leonard at a morning service. They continued worshipping in this building until it burned in March of 1951.

A survey committee considered several sites for a new church. They decided to purchase four acres at the corner of Coy and Navarre Avenue. Plans

The Churches

were drawn for a new church which called for an expenditure of \$160,000. At present only a portion of the complete plan is in operation. When the need arises plans will be completed.

The church was dedicated on Sunday, September 21, 1952.

In addition to the regular church services, the congregation sponsors two Boy Scout Troops and a daily kindergarten school. During the summer a Care Center for Migrant Children extends its services to approximately thirty children.

The church membership is 653 with a church school enrollment of 210.

The following is a list of rectors who have served St. Paul's Church:

Reverend H. E. Jephson, 1890
Harold Morse (Lay Leader)
Reverend G. F. Smythe, 1890-1891
Reverend J. C. Sage, 1891-1893
Reverend Harold Morse, 1893-1897
Reverend William C. Hopkins, 1897-1902
Reverend Guthrie Pitblado, 1902-1905
Reverend J. C. Ferrier, 1906-1913
Reverend H. M. Laws, 1913-1917
Reverend Charles P. Burgoon, 1917-1922
Reverend A. J. J. Gruetter, 1923-1926
Reverend Paul R. Savanack, 1927-1932
Reverend T. L. Rynder, 1932-1933
Reverend Francis T. Coe, 1934-1935
Reverend Glenn F. Lewis, 1936-1940
Reverend William S. Brown, 1941-1943
Reverend W. Howard Graham, 1944-1949
Reverend Malcolm McClenaghan, 1949-1954
Reverend Harold E. Braun, 1955-

NAZARENE CHURCH

In 1931 Reverend Fredrick began holding meetings in the home of Hiram Wescotte on Cresceus Road in Oregon Township. The attendance increased and they decided to rent Graver's Saloon which was not in use at the time. Arrangements were made for a rental of \$10.00 a month. Evangelist services were held. The membership increased and services continued for about three years at this location.

The church was organized by the District Superintendent Reverend Gibson with 25 charter members October 6, 1932 in the building on Woodville Street. Reverend Paul Marshall was assigned as pastor.

A new church was built at 1140 East Broadway.

It was dedicated May 31, 1935 under Reverend John Hansen. Difficulties were encountered but overcome by hard work and prayer. More people became interested and in time they felt the need of a new building with educational facilities. Under the leadership of Reverend V. E. McCoy a new site located on Starr Avenue in Oregon was purchased. In 1960 they began the work of building a new church. It was completed and the first services held April 30, 1961.

During the time the church was under construction Reverend V. E. McCoy died and Reverend J. G. Wells was appointed to fill the vacancy.

The new building provides a sanctuary with a wing containing rooms for educational purposes and young people's worship services. It was dedicated July 16, 1961 under the direction of District Superintendent Carl Clendennen.

The membership at present is 170.

Pastors who have served this congregation are: Reverend Paul Marshall, Reverend John Hansen, Reverend C. L. Rodda, Reverend T. N. DeBoard, Reverend L. P. Rossman, Reverend W. E. Milby, Reverend V. E. McCoy, Reverend J. G. Wells.

FUTURE CHURCHES

Divinity Lutheran Church at the corner of Clarence and Case Street in Ironville is looking for a site which they hope will be in Oregon.

Ironville is being developed an industrial center and the school, churches and homes will move to other parts of the city or surrounding territory.

Divinity Lutheran Church has been organized for many years and the members are eager to keep their identity. To do this they will need the assistance of the American Lutheran Mission. Thus, at present, the officials of the church are unable to obtain definite information in regard to their future location.

ST. LUKE'S EVANGELICAL LUTHERAN CHURCH

A new site for this church has been purchased on the corner of Seaman and Yondota Road.

Some improvements have been made. They have built a community house at the rear of the church which is used for educational and social purposes.

To meet the needs of the growing church a new

The Churches

site was necessary as the present location was donated with certain restrictions written in the deed.

A new modern church with educational facilities will be erected on the new site.

PRINCE OF PEACE LUTHERAN CHURCH

This is the first Lutheran church in the community belonging to the Missouri Synod. Their church which is under construction at the present time is located on Pickle Road.

SOUTHERN BAPTIST CHURCH

This group at present is worshipping in the old Community Church on Bay Shore Road. It is the

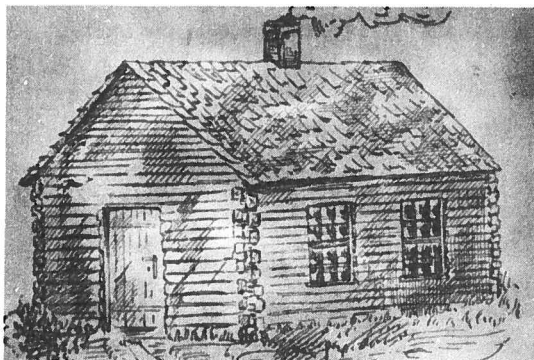
first Southern Baptist church in the community. At present their new church on Seaman Road is under construction and should be completed before the end of the year.

FIRST ASSEMBLY OF OREGON

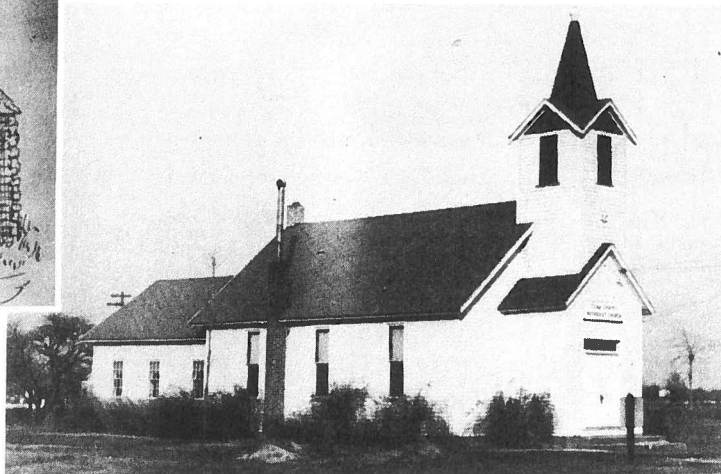
This is one of the churches known as the First Assembly of God. The congregation under the leadership of Reverend C. Glenn Parker began services in June 1958 in a small church at 2127 Hurd Street. The congregation has increased its membership and decided to purchase a site on Seaman near Berlin.

They expect to begin building in the near future. At present they have a membership of 97.

The Churches



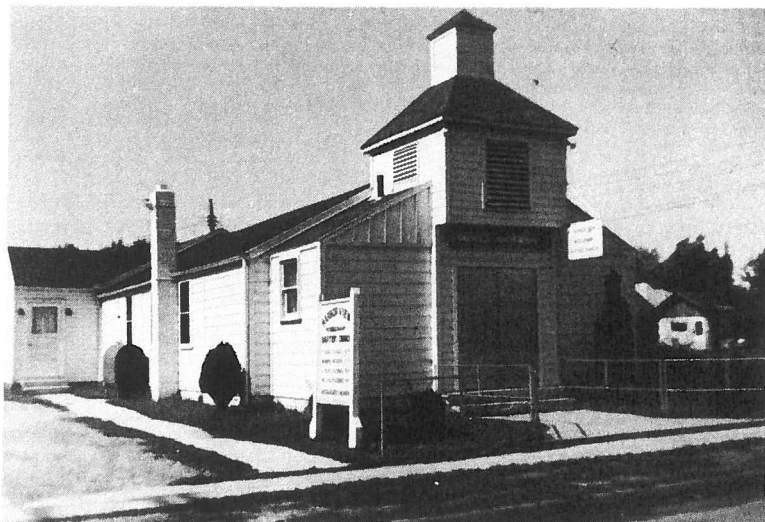
First Congregational Church



Clay Chapel M. P. Church



Bay Shore Community Church, now being used by Southern Baptist.



Harbor View Missionary Baptist Church.

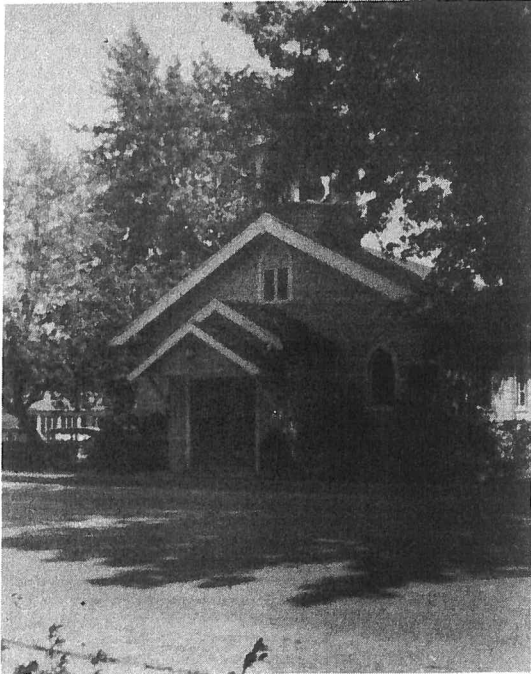


Rev. John A. Merickle in his car. The church was burned later and a new one erected.
Loaned by Mrs. Mildred TenEyck

The Churches

Cornerstone laid, July 15, 1912.

A growing church. They now have a large hall for social activities.



Our Lady of Mount Carmel



St. Ignatius Church built to take care of its growing congregation.
Given by Edward Momenee.

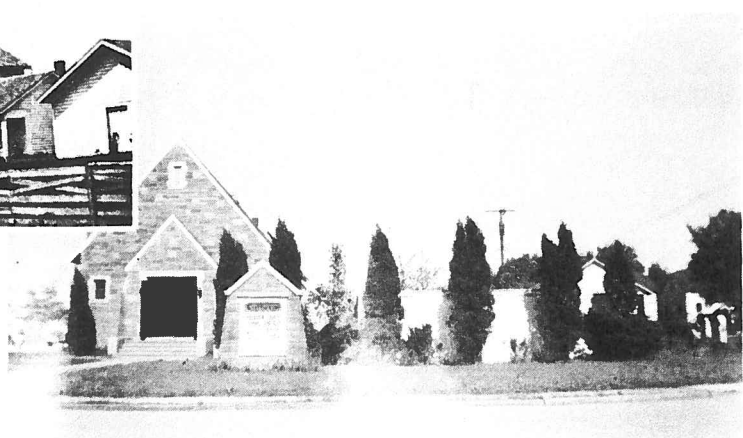


A new site has been chosen at Yondota and Seaman.
St. Luke's Evangelical Lutheran Church



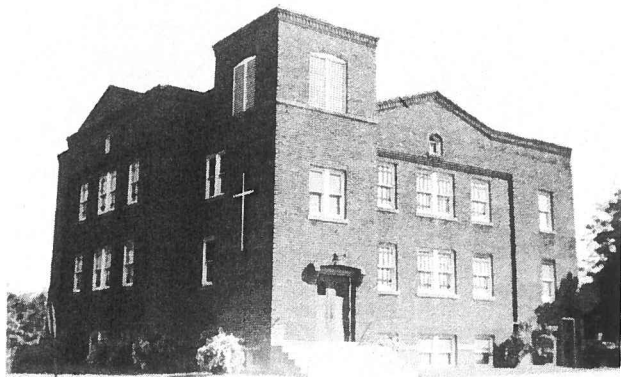
First church, a wooden structure, built in 1863.

The picture shows the second church with the parsonage and school house.
Picture loaned by Elma Uremeyer



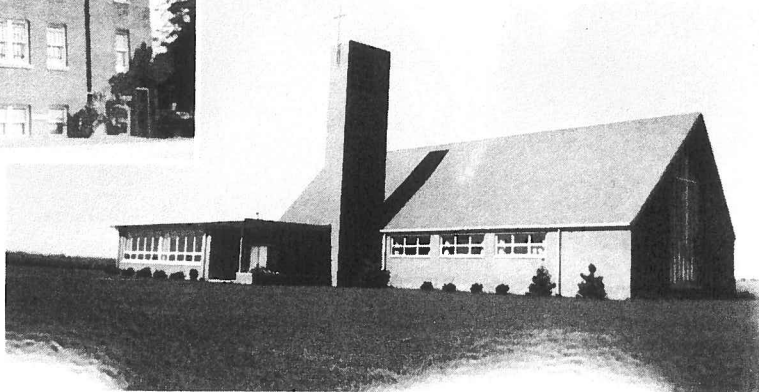
First St. Mark's Lutheran, built in 1863.
Church rebuilt and Educational Building added.

The Churches



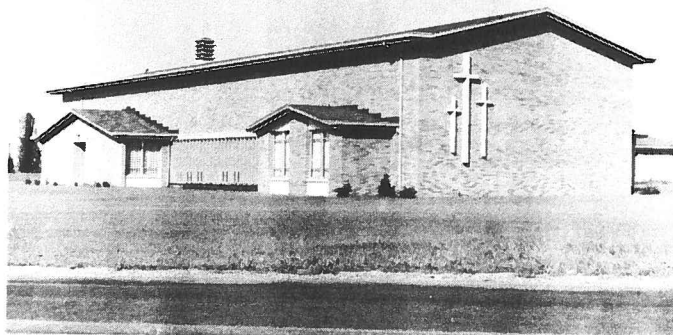
Bethany M. E. Church
Their first church was a frame
building.

Christ Church Methodist
1957



First Gospel Tabernacle of Oregon —
formerly Clay Chapel.

Faith E. U. B. — Built in 1950



The Churches

Bono Baptist Church — built
in 1903.



St. Paul's Episcopal — Built,
1952.

Nazarene Church on Starr
Avenue — Built in 1961

